

2018 NHAC Sullivan County Hosted Conference Group Discounted Lodging

IMPORTANT NOTE! Group discounted lodging is available for ty elected officials and county staff; *conference attendees must make their own lodging reservations*. See hotel contact info and room descriptions below. **Don't forget to mention "Sullivan County" when making reservations to get your discount!**

Lodging fast facts:

1. Hotel names & rates:

Mountain Edge Resort & Spa (MER); \$159 per night

Sunapee Lake Lodge (SLL); \$89 per night

Note: These rates exclude 9% state rooms & meals tax, daily housekeeping gratuity and any room service fees.

2. Check-in/out times: Arrival on Sunday, Sep. 16th after 4 PM; departure on Wednesday, Sep. 19th by 11 AM. a first-reserved basis.

3. Location: Both facilities are located on Highway 103 less than 1 mile away from the Mt Sunapee Resort where the conference activities will take place.

There are 95 total rooms between these two lodging facilities. However, most of the Mountain Edge Resort rooms are suites that can accommodate more than one party. Please consider double occupancy for these suites to maximize the number of conference attendees at the Mountain Edge Resort. When making reservations, please confirm with Justin Barnes, General Manager, any specific questions you have about the room descriptions provided.

Please contact the Sullivan County Commissioners Office at 603-863-2560 for additional lodging, once all rooms are booked at these two facilities. Thank you!

2018 NHAC Sullivan County Hosted Conference Group Discounted Lodging

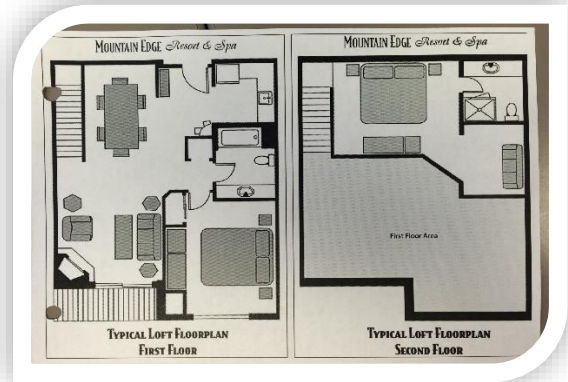
Mountain Edge Resort & Spa

1380 Route 103, Newbury NH 03255

Tel. (603) 763-4600 Ext. 226 Justin Barnes, General Manager

Check-in time: 4:00pm

Check-out time: 11:00am



See lodging services and a gallery of pictures at:

<http://www.mountainedgeresort.com/>

- ***Eighteen (18) One Bedroom-Full Bath-Den Suites:*** master bedroom with King bed, Queen pull-out sofa bed, full pull-out sofa in den, and seated patio or balcony
- ***Seven (7) Two Bedroom-Full bathroom-Suites:*** master bedroom with King bed, Queen pull-out sofa and Queen bed in second bedroom and seated patio
- ***Eleven (11) Two Bedroom-Full & ¾ bathrooms-Loft Suite:*** master bedroom with King bed, King bed & full pull-out in loft, Queen pull-out sofa bed, and seated patio or balcony
- ***Four (4) One Bedroom-Full & ¾ bathrooms-Den Suites:*** master bedroom with King bed, Queen pull-out sofa bed, and seated patio or balcony
- ***Two (2) Two Bedroom-Two Bathrooms-Lofts:*** master bedroom with King bed, Queen pull-out sofa, and seated patio or balcony

Lodging cancellations must be done through the resorts noted, subject to their cancellation policies.

2018 NHAC Sullivan County Hosted Conference Group Discounted Lodging

Sunapee Lake Lodge

1403 Route 103, Newbury NH 03255

Tel. (603) 763-4600 Ext. 226 Justin Barnes, General Manager



Eight (8) rooms with two King size beds, full bathroom

Eleven (11) rooms with one King size bed, full bathroom

Thirty-four (34) rooms with two Queen beds, full bathroom

Check-in time: 3:00pm

Check-out time: 11:00am

Check out lodging services and a gallery of pictures at

<http://www.sunapeelakelodge.com/>

*There are **no** on-line reservations for event – please call # above.*